

The Everafter Urn Collection

Exclusively from Crescent Memorial

The Everafter Urn Collection, is a high quality cultured stone urn and keepsake collection made in North America and found nowhere else. Each urn is handmade, and individually crafted; making each a One-of-a-Kind piece. There is nothing else like it! These beautiful works of art and inspiration will help communicate the high quality and unique services your funeral home provides.



Crescent
MEMORIAL

1.888.856.4516

www.crescentmemorial.com

Love Photo Urn

This beautiful Photo Frame Urn is a stunning celebration of Life and Love. The well thought out design holds a special place in one's heart for an everlasting memory found in a photograph and encapsulated with stone.



30-R-1016
Back loading.
Custom Engraving Additional.
9.5" W x 11.25" H x 6" D, 205 C.I.
18 LBS.

Sun Rays Collection



Sun Rays Collection



The Sun Rays cultured stone urn is impressive in both size and strength which are set in contrast to the softness of the heartfelt verse and beautiful imagery.

FULL SIZE URN

30-R-1005

Bottom loading.

9.5" W x 9.5" H x 6" D, 210 C.I.

15 LBS.



KEEPSAKE

30-R-3005

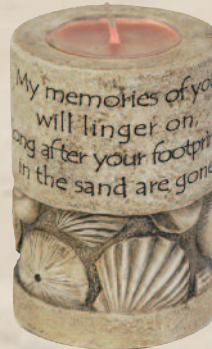
4.5" H x 4.5" W x 2.7" D, 1 C.I.

Keepsakes Collection

These cultured stone keepsakes are a wonderful way to honor your cherished loved one. Each is inscribed with beautiful words of remembrance and are the perfect way to keep your loved one close to you.



Rose
30-R-3007
3.5" H x 2.4" W, 1 C.I.



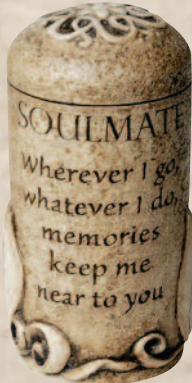
Seashell
30-R-3006
3.6" H x 2.6" W, 1 C.I.



Wheat
30-R-3004
5" H x 2.4" W, 1 C.I.



Blank
30-R-3014
4" H x 2" W, 1 C.I.



Soulmate
30-R-3013
4" H x 2" W, 1 C.I.



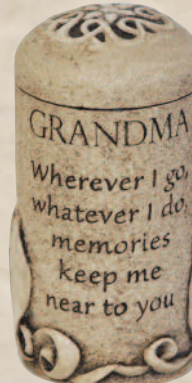
Mom
30-R-3011
4" H x 2" W, 1 C.I.



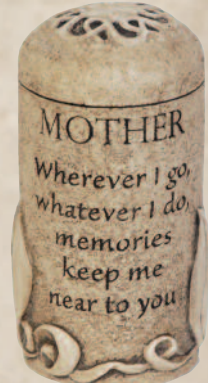
Dad
30-R-3010
4" H x 2" W, 1 C.I.



Grandpa
30-R-3009
4" H x 2" W, 1 C.I.



Grandma
30-R-3008
4" H x 2" W, 1 C.I.

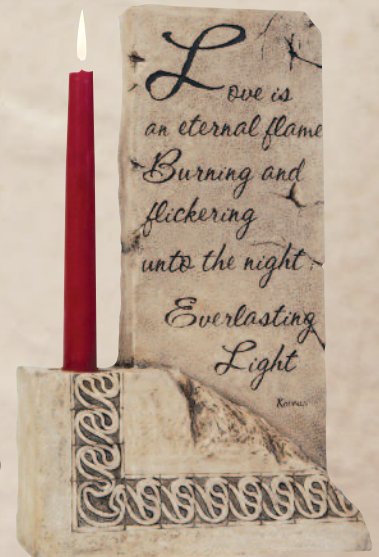


Mother
30-R-3012
4" H x 2" W, 1 C.I.

Custom Engraving Additional

Eternal Candle Holder Keepsake

This remarkable candle holder keepsake will hold a tea light or a tapered candle of your choice. As the candle burns it glows ever softly on the artist's own words "Love is an eternal flame, Burning and flickering unto the night; Everlasting Light." Its stone appearance, combined with eternal poetry, makes this a beautiful celebration of life. Can be used at a service and brought home, placed in a special spot and lit in remembrance.



30-R-EA2290
8" W x 3" D x 12.5" H, 1 C.I.
(Candle not included)

Forever in Our Hearts Collection



Forever in Our Hearts Collection



Urns & Keepsakes can be custom engraved with name & dates for an additional fee.



(Back View)

FULL SIZE

30-R-1002

7" W. x 11.25" H. x 6" D., 200 C.I.
14 lbs.

"I just received this (Forever in Our Hearts) Urn which is really a piece of art. It is absolutely stunning and I could not have been happier. It's heavy, it's solid, it's beautiful on the front and with a beautiful design on the lid and back..... It appears to be a piece of art that is displayed in my home without the traditional look of an urn that one would notice immediately" -Stephante



KEEPSAKE

30-R-3002

2.25" W. x 4" H. x 2" D., 1 C.I.
1 lb

PHOTO KEEPSAKE

30-R-4002

8.5" W. x 5" H. x 2.375" D., 1 C.I.
6 lbs.



CANDLE

30-R-2002

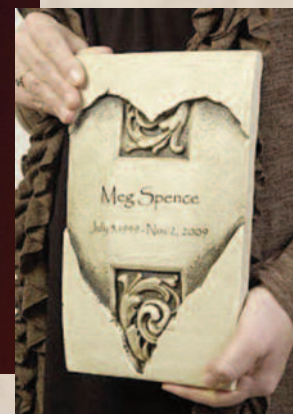
4.5" W. x 6" H. x 4" D., 9 C.I.
5 lbs.



Plaque

30-R-5002

6.5" W. x 10.5" H.
Does not hold cremains.
4 lbs



In Flight Collection



In Flight Collection



FULL SIZE

30-R-1001

Mahogany Base.

Bottom loading.

8.25" W. x 10.25" H. x 5" D., 200 C. I.

12 lbs.

Urns & Keepsakes can be custom engraved with name & dates for an additional fee.

"I bought a large 'In Flight' urn for my husband's remains and five keepsake versions of the same urn for me and my children. First, I want to tell you not only how beautiful and simple they are but also how perfect. When I saw the urn, I immediately thought of the photo I have of my husband on the beach, with his arms raised up toward a swirling group of seagulls (that we had thrown bread to so that we could draw them into the photo). The urn resembled his pose and the surrounding birds, and how spiritual a message we took from the urn as we 'saw' him take the shape of a dove and fly away. Your artistry helped bring our family some sense of peace as we went through a very difficult time".

Jane



KEEPSAKE

30-R-3001

3.5" W. x 4.375" H. x 2.25" D., 1 C.I.

2 lbs.

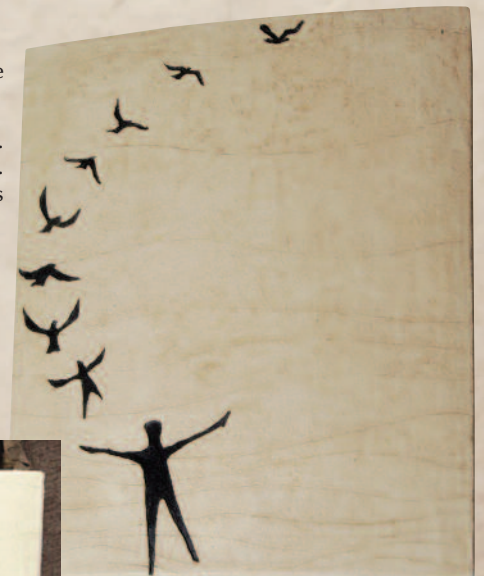
Plaque

30-R-5001

8" W. x 9.25" H.

Does not hold cremains.

4 lbs



CANDLE

30-R-2001

5.5" W. x 5" H. x 3.75" D., 12 C.I.

6 lbs.

(Candle not included)



Infinity Collection



Infinity Collection

The Infinity Urn is an artistic beauty,
sculpted with intricate designs.



FULL SIZE

30-R-1003

Custom Engraving Additional.
7" W. x 7" H. x 7" D., 200 C.I.
10 lbs.



KEEPSAKE

30-R-3003

Custom Engraving Additional.
2.5" W. x 2.5" H. x 2.5" D., 1 C.I.
1 lb.

"I would like to say I think the urn is very beautiful. As an Architect and designer I wanted to find an urn that was unique from all the rest. I searched long and hard through a million boring urns before I found yours. It fits with the memory of my father in so many ways."

-BN.

The Infinity Keepsake Candle Urn is an ornate
candle holder that also acts as a keepsake urn.
It is both beautiful and functional.



CANDLE

30-R-2003

Not able to be engraved
4.25" W. x 4.25" H. x 4.25" D., 10 C.I.
4 lbs.
(Candle not included)

Pet Collection

This beautiful urn has detailed hearts fading into paw tracks and a unique tapered back. Comes stock engraved with "You left paw prints on our hearts," or can be custom engraved. Available in two sizes.



FULL SIZE
30-R-EA100
6.5" W. x 4.5" H. x 8.25" D., 85 C.I.
7 lbs.



KEEPSAKE
30-R-EA200
5" W. x 6.5" H. 3.5" D., 40 C.I.
4 lbs.

Urns & Keepsakes can be custom engraved with name & dates for an additional fee.

This beautiful photo keepsake has a detailed heart with the sentiment, "You left paw prints on our Hearts," and paw track accents along the base.

PHOTO KEEPSAKE
30-R-PET02
8.5" W. x 5" H. x 2.375" D., 1 C.I.
6 lbs.



About The Artist

RANDY KOUFALIS

Master sculptor and mold maker Randy Koufalis, has over 25 years experience in sculpting and design. He was born in Vancouver, British Columbia where he continues to reside. Randy blends old motifs and traditions with his own unique style to create both functional and decorative works of art and inspiration. These urns are a stunning celebration of artistry and imagination, captured in stone, timeless for all to enjoy.

The concept and design process of each piece begins long before any actual sculpting takes place. Hours of research, both technical and historical, go into every piece. Initial concept sketches are compiled and modified and prototypes are completed. Using rough 3-D models as references, the creative process begins by turning models into finished sculptures. Each piece is made of actual re-constituted stone, taking great pride in making sure the quality of our products is unsurpassed.



Each original, finely handcrafted Urn, Keepsake, and Memorial Art in the RK Productions "Everafter Collection™" is an original sculpture, hand sculpted and hand painted by artisans. It is from these original sculptures or "Masters" that each stone urn is created. Each Urn is a beautiful expression of style and creativity, celebrating and honoring life.



Made in Canada with USA stone